



Kernel for PST

“Perform Convenient Email Recovery from
Corrupt PST Files”

PRODUCT GUIDE

Table of Contents

1.	Introduction to Kernel for Outlook	5
1.1	Using this Manual	5
1.2	About Kernel for Outlook	6
1.3	Salient Features	6
1.4	Who Should Use this Software?	7
2.	Getting Started	8
2.1	Installation Pre-requisites.....	8
2.2	Downloading Kernel for Outlook for the First Time	9
2.3	Install Kernel for Outlook	9
2.4	Start Kernel for Outlook	9
2.5	Uninstall Kernel for Outlook	10
3.	Software Interface	11
3.1	Menu-bar.....	11
3.2	Tool-bar.....	12
3.3	Status Bar	14
3.4	Buttons Used.....	14
3.5	Customize User Interface.....	14
4.	Repairing PST Files	15
5.	Full Version	21
5.1	Requirement of Full Version.....	21
5.2	Purchasing Full Version.....	21
6.	Support.....	22
7.	Troubleshooting	23
7.1	Common Issues	23
7.2	Frequently Asked Questions	23
8.	Legal Notices	24
8.1	Copyright	24
8.2	Trademark	24
8.3	Disclaimer	24

8.4 License Agreement 24

Table of Figures

Figure 3.1: File Menu 11

Figure 3.2: Tools Menu..... 11

Figure 3.3: Help Menu 12

Figure 3.4: Status Bar 14

Figure 4.1: Main Window 15

Figure 4.2: Selected PST file 16

Figure 4.3: Repairing Process 17

Figure 4.4: Recovered Files 18

Figure 4.5: Saving Options 19

Figure 4.6: Browse for Folder..... 20

1. Introduction to Kernel for Outlook

Welcome to the user manual for Kernel for Outlook, the most effective and convenient .PST file repair tool available that recovers emails from broken PST file. This user manual comprises step by step guidelines on using Kernel for Outlook.

1.1 Using this Manual

This user manual is intended to guide users on using Kernel for Outlook. We suggest that first time users should read this user manual completely and carefully before proceeding to use the software. However, if you are an experienced user, you can use the table of contents to find out information pertaining to the tasks that you need to perform by using Kernel for Outlook.

You can use the table of contents to navigate through different sections of this user manual. The table of contents lists all the sections that are contained in this user manual in chronological order. The user manual comprises the following sections:

- Introduction
- Getting Started
- Software Interface
- Repairing PST Files
- Full Version
- Support
- Troubleshooting
- Legal Notices

Certain abbreviations have been used throughout this manual. For clear understanding of the contents of this user manual, please go through the list of abbreviations, mentioned below, before reading the manual.

1.1.1 List of Abbreviations

PST: Personal Storage Files

QFSCI: Quick File System Component Identification

MS: Microsoft

RAM: Random Access Memory

MB: Mega-Byte

GB: Giga-Byte



for PST

1.2 About Kernel for Outlook

Kernel for Outlook is a PST repair tool which recovers and restores emails and other related data items like attachments, calendars, appointments, contact, journals and notes etc. from corrupt, damaged or broken PST files. There are various reasons for corruption of PST files, for instance storage limit of 2GB has exceeded, header structure has got corrupt, virus attacks, accidental deletion of emails, and loss due to exchange server corruptions.

You usually get the following error messages once the PST file has gone corrupt:

- Errors have been detected in file 'file_path'
- Unable to expand the folder
- The file could not be repaired therefore cannot be reopened

Kernel for Outlook PST Repair uses quick algorithm for searching and restoring the lost, corrupt or deleted personal folder files (.pst) email messages within minutes. Even the password protected PST files are unlocked and emails are recovered with Kernel for Outlook.

The files which have exceeded 2GB space limitation are successfully repaired, so file size is not a constraint at all for Kernel for Outlook. The software is equipped with four saving options:

- **Save as PST**: Emails and other items are saved in PST file
- **Save as EML**: Emails and other items are saved in EML file(s)
- **Save as MSG**: Emails and other items are saved in MSG file(s)
- **Save as DBX**: Emails and other items are saved in DBX file

1.3 Salient Features

Salient features of Kernel for Outlook include:

- Recovers permanently deleted emails
- Recover emails from corrupt PST file
- Recover emails from broken PST file which get corrupt due to 2GB limitation of MS Outlook
- Recovers all items including mails, draft, calendars, contacts, journal, tasks, notes etc.
- Recovers emails from password protected pst files also
- Equipped with saving options
- Supports email recovery from .PST files created with MS Outlook 97, 2000, 2002(XP), 2007 and 2003
- Free demo to experience capabilities of the tool before purchasing it

1.4 Who Should Use this Software?

Kernel for Outlook is PST email repair software which uses QFSCI technique to recover the damaged or corrupt personal folder files (.pst files). It is useful even when the 2GB file limitation has been exceeded, if there is accidental email deletion, or virus attacks.

It is useful for those who have lost their important emails, contacts and that particular lose is taking a toll on their business continuity. Kernel for Outlook is a definite solution to all the PST file corruptions and one must go for the evaluation version of the software to test its recovery capabilities.

2. Getting Started

Now that you have understood the features and potential of Kernel for Outlook, you are ready to get a hand on experience of the software. To start repairing .PST files, you will first need to download and install this software.

It is strongly recommended that before installing Kernel for Outlook, you should go through the installation pre-requisites for the software to ensure that your computer is appropriately configured to run the software.


2.1 Installation Pre-requisites

The various pre-requisites for installing and running Kernel for Outlook can be broadly classified into two major categories – Hardware requirements and Software requirements.

2.1.1 Hardware Requirements:

The hardware requirements for installing the software are as follows:

- Pentium Class Processor
- Minimum 64MB RAM (128 MB recommended)
- 10MB for Software installation
- Disk Space - Enough space to store the repaired PST files

 You should have at-least 10 MB of free disk space if you want to repair and save a 10 MB .pst file.

2.1.2 Software Requirements:

The software requirements for installing the software can further be grouped into two categories – Operating system requirements and Microsoft Outlook version requirements. The requirements are as follows:

2.1.2.1 Operating System Requirements

Supported Operating Systems:

- Windows Vista
- Windows XP
- Windows 2003
- Windows 2000

2.1.2.2 Microsoft Outlook Version Requirements

Supported Microsoft Outlook versions:


- MS Outlook 97
- MS Outlook 98
- MS Outlook 2000
- MS Outlook 2003
- MS Outlook 2007

2.2 Downloading Kernel for Outlook for the First Time

After checking your computer with the prescribed system requirements for Kernel for Outlook, you can download and install the software on your computer. You can buy the full version of the software from any one of our authorized resellers– Element5, Asknet and 2CO.

If you want to try using Kernel for Outlook before buying it, you can download the evaluation version from the following link:

<http://www.nucleustechnologies.com/Download-Microsoft-Outlook-Mails-Recovery-Software.php>

 You can repair the corrupt PST files by using the evaluation version of Kernel for Outlook; however, the evaluation version lets you view the preview of the repaired file but does not save the recovered emails until you purchase Full version of the software.

2.3 Install Kernel for Outlook

After downloading the installer file for Kernel for Outlook, you can install the software by running the file. To install Kernel for Outlook:

1. Double-click the Kernel for Outlook installer. Follow the on-screen instructions.

The **Setup Installation Complete** screen will be displayed.

2. Click **Finish** to launch the software.

2.4 Start Kernel for Outlook

To start Kernel for Outlook:

Click the **Start → All Programs → Kernel for Outlook**

Alternatively, you can launch Kernel for Outlook by double-clicking the shortcut icon available on the Desktop and Quick Launch icon.


2.5 Uninstall Kernel for Outlook

You may need to uninstall Kernel for Outlook. To uninstall

1. Click the **Start → All Programs → Kernel for Outlook → Uninstall Kernel for Outlook**

A warning message will be displayed.

2. Click **Yes** to uninstall Kernel for Outlook.

 Before proceeding to uninstall Kernel for Outlook, you must ensure that the software is not running in system background.

You can alternatively uninstall Kernel for Outlook from the **Control Panel** by performing the following steps:

1. Click the **Start Menu → Control Panel** and then double click the **Add or Remove Programs** icon.
2. Select **Kernel for Outlook** and click **Remove**.

A warning message will be displayed.

3. Click **Yes** to uninstall Kernel for Outlook.

3. Software Interface

Now that Kernel for Outlook has been installed on your computer, you can start using the software after getting acquainted with the software interface.

3.1 Menu-bar

The menu-bar of Kernel for Outlook comprises three main menus – File, Tools, and Help.

3.1.1 File Menu

The **File** menu comprises three menu items.

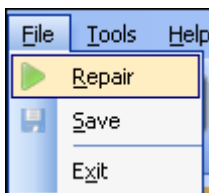


Figure 3.1: File Menu

Menu items in the **File** menu:

Field Name	Field Description
Repair	Select to start the repairing of corrupt PST files
Save	Select to save the recovered emails and other items from PST files
Exit	Select to close the software

3.1.2 Tools Menu

The **Tools** menu comprises five menu items.

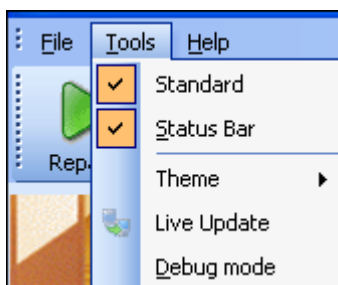


Figure 3.2: Tools Menu

Menu items in the **Tools** menu:

Field Name	Field Description
Standard	Select to show or hide Tool bar/Standard bar
Status Bar	Select to show or hide Status bar
Theme	Select to change the software theme
Live Update	Select to get the latest version of software
Debug mode	Select to generate a log file for Kernel software

3.1.3 Help Menu

The **Help** menu comprises three menu items.

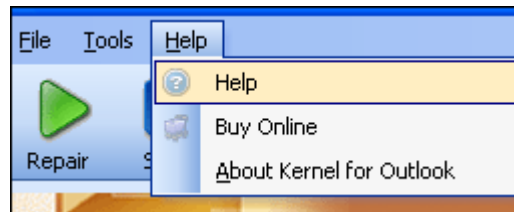







Figure 3.3: Help Menu

Menu items in the **Help** menu:

Field Name	Field Description
Help	Select to view help information pertaining to performing various tasks using Kernel for Outlook
Buy Online	Select to purchase the software online from the website
About Kernel For Outlook	Select to view version-related and support information of Kernel for Outlook

3.2 Tool-bar

The tool-bar in Kernel for Outlook is displayed below the menu-bar. The tool-bar provides a convenient and user-friendly method to perform certain actions that can also be performed by using the menu-bar. Read the information in the table below to find out about the tool-bar buttons:

Button	Button Name	Button Description
	Repair	Select to repair the selected PST file
	Save	Select to save the recovered PST file items
	Live Update	Select to get the latest version of the software
	Help	Select to view the User Guide of the software
	Buy Online	Select to purchase the software online from the website

3.3 Status Bar

Status bar is displayed at the bottom of the software window. The text 'Ready' is displayed on the status bar if Kernel for Outlook is ready to be used. Status bar also displays the text 'CAP', 'NUM', 'SCRL' which respectively correspond to the Caps Lock, Num Lock, and Scroll Lock keys on your keyboard. If any of these keys are pressed, the color of the corresponding text will turn blue/black.


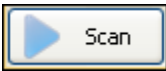

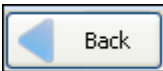
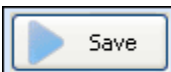

Kernel for Outlook | Ready

CAP | SCRL

Figure 3.4: Status Bar

3.4 Buttons Used

Apart from the standard options available in the menu-bar and the tool-bar, following are the main buttons used throughout the software:

	Click to select the corrupt .pst file from your system
	Click to start the process of repairing the corrupt .pst file
	Click to stop the repairing process
	Click to view the previous screen
	Click to save the recovered file items
	Click to return to the main window of Kernel for Outlook

3.5 Customize User Interface

You can add or remove toolbar buttons by clicking:

- **Add or Remove Buttons** → **Standard** in the toolbar and selecting appropriate buttons.

4. Repairing PST Files

Now that you have complete familiarity of the user interface of Kernel for Outlook, you are ready to repair .pst files.

To repair .PST files:

1. Launch Kernel for Outlook.

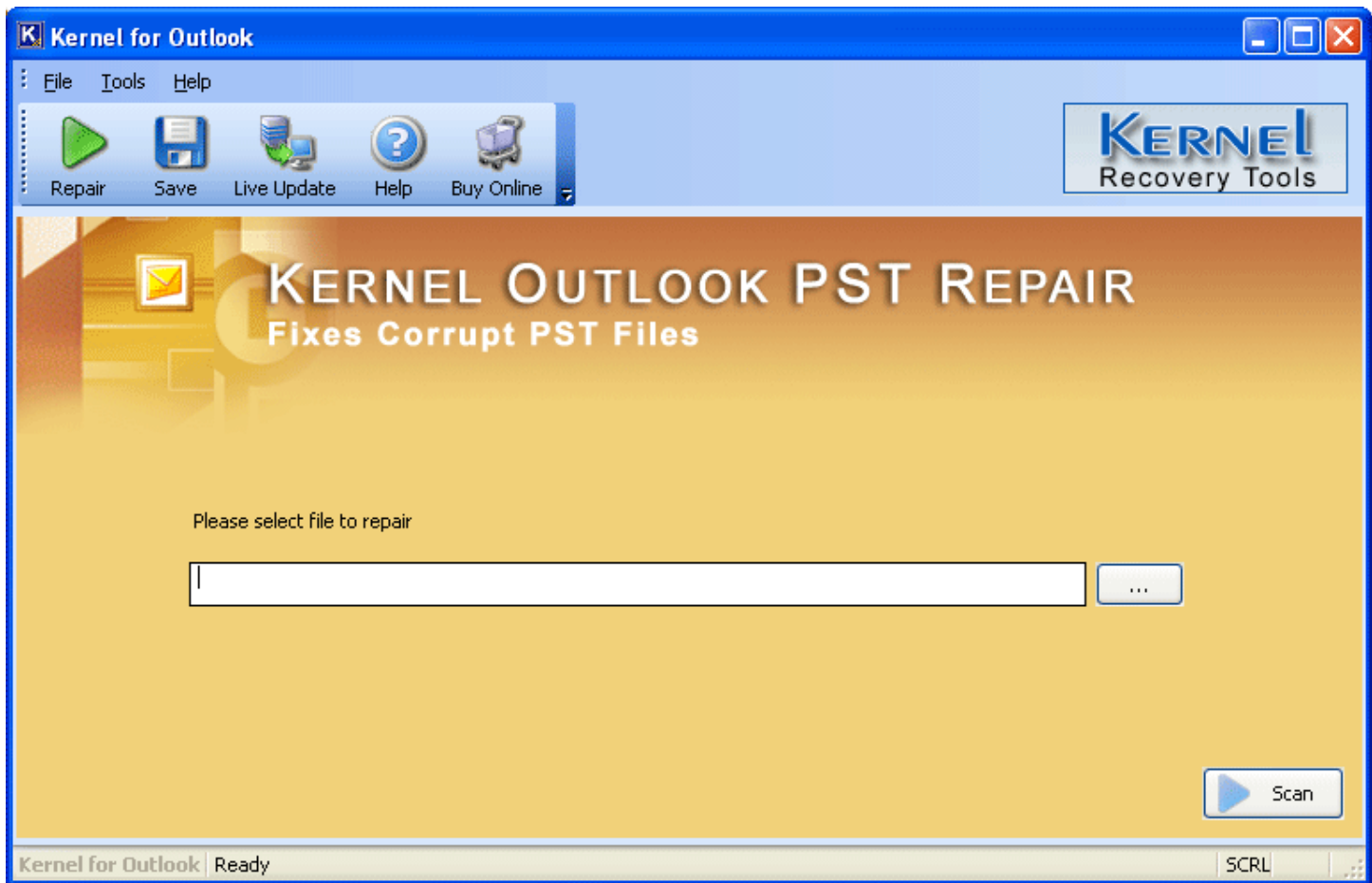


Figure 4.1: Main Window

2. Select the corrupt PST file by clicking the  button.

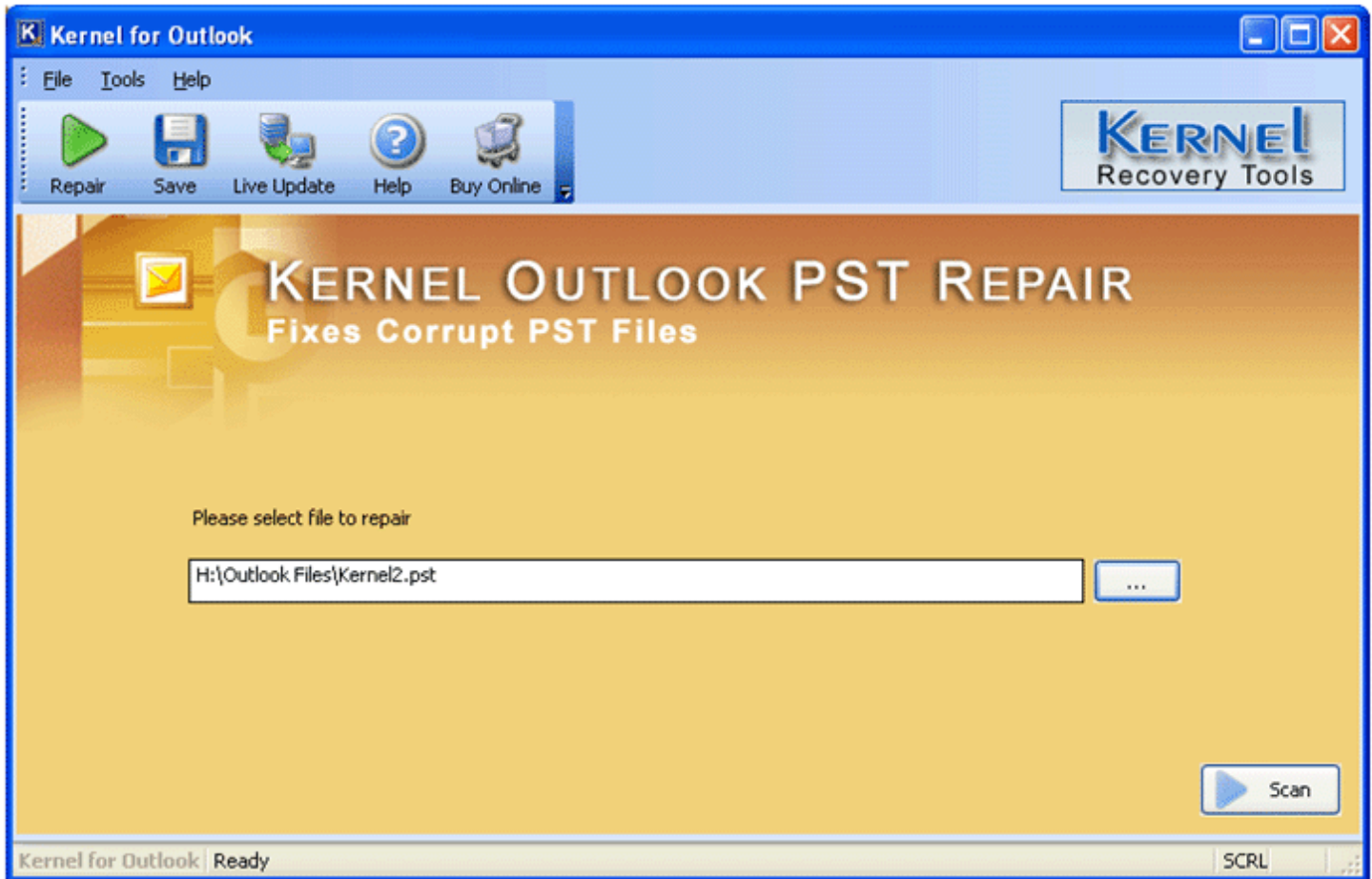


Figure 4.2: Selected PST file

3. Click the **Scan** button to start the process of scanning.

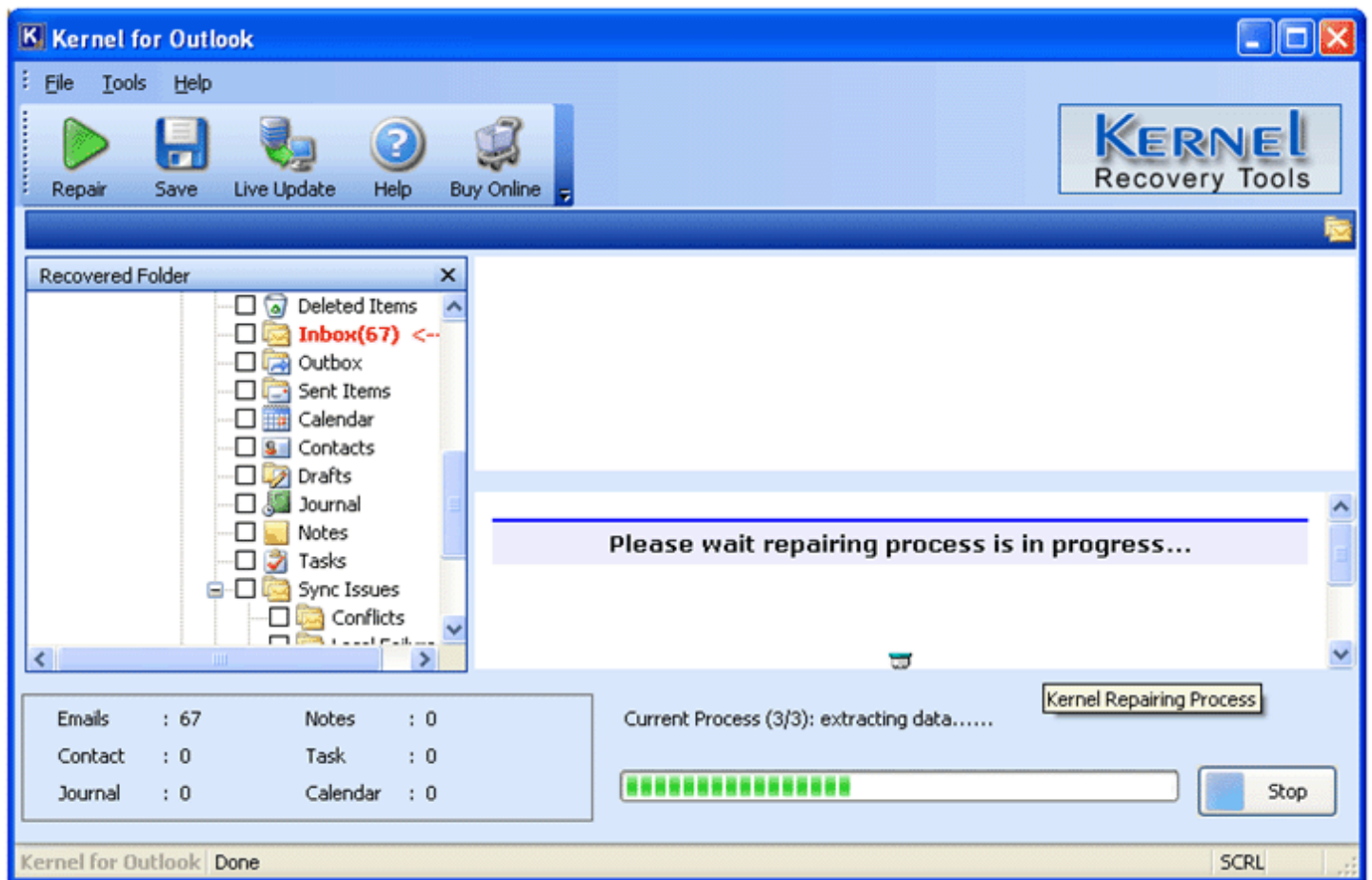


Figure 4.3: Repairing Process

4. Software will recover the user mailbox folders of the PST file and list the emails and other items in tree like structure.
5. View preview of the recovered emails in the software:

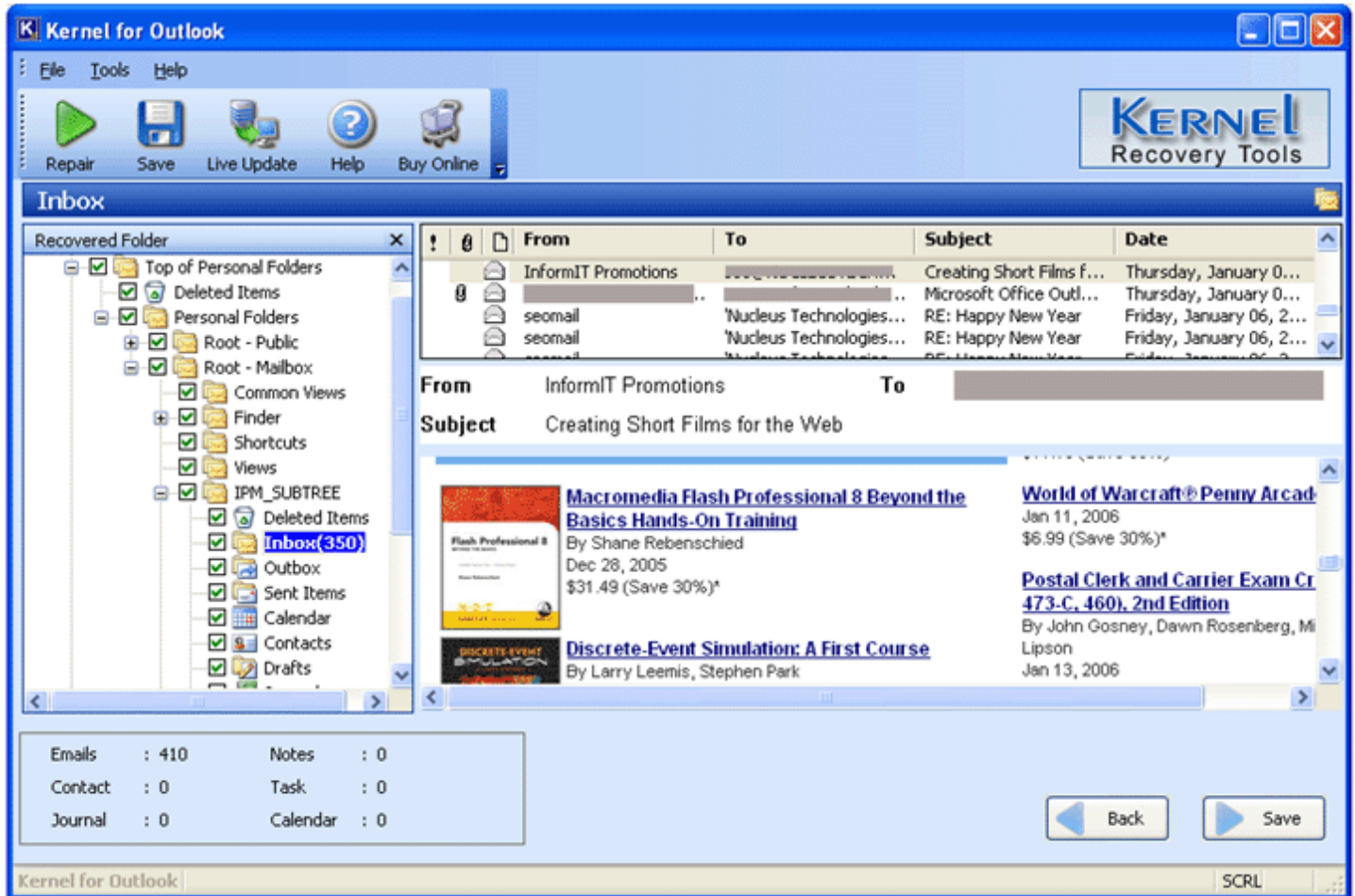


Figure 4.4: Recovered Files

6. Select the checkbox for the corresponding recovered folder which you want to save and click the **Save** button.
7. After clicking the **Save** button, the software provides you four options to save the repaired pst file. i.e.
 - Save as **PST** (Microsoft Outlook)
 - Save as **EML** (Outlook Express)
 - Save as **MSG** (Microsoft Outlook)
 - Save as **DBX** (Outlook Express)

 All four options will be available once you buy the software.

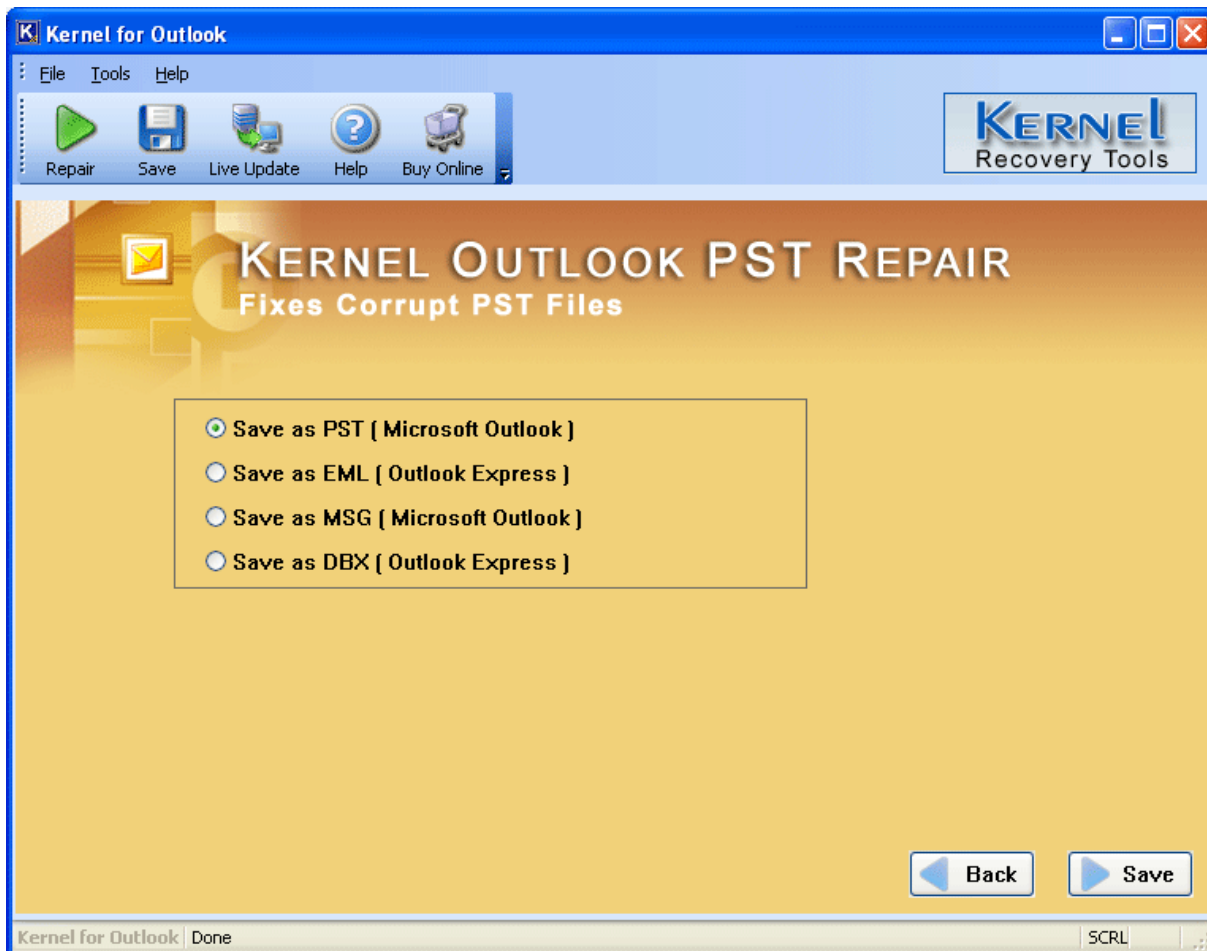


Figure 4.5: Saving Options

8. Choose the desired option and click the “Save” button to save the recovered results. Software asks you for the location where you want to save the results.
9. Browse for the desired location and click **OK** to save at the selected location.

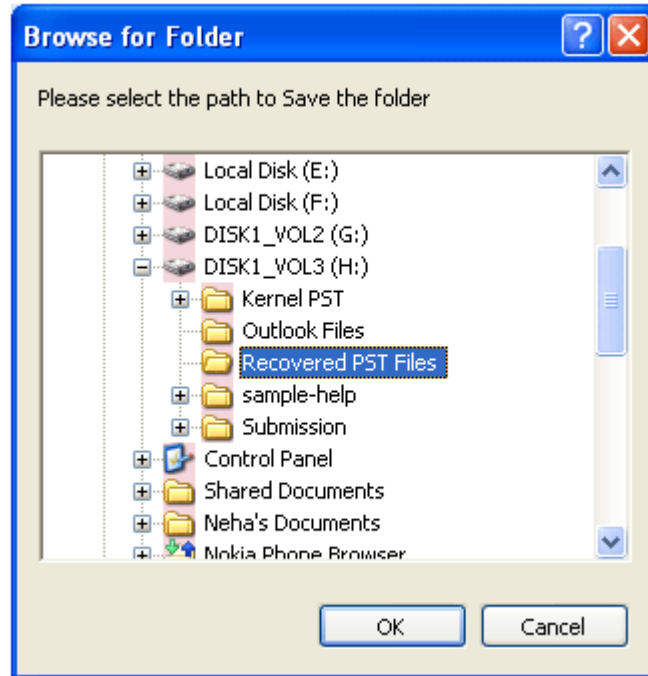


Figure 4.6: Browse for Folder

Software now saves the repaired PST files in **new .PST** file.

10. Click on the **Finish** button to return to the main window of software. Click 'X' button to exit from the software.

5. Full Version

Although you can use Kernel for Outlook evaluation version for free and experience the capabilities of the software, there are certain features that are not available in the evaluation version.

5.1 Requirement of Full Version

By using the evaluation version of Kernel for Outlook, you can repair corrupt .pst files; however, you cannot save the content of the repaired files.

You will need to buy the full version of the software to save the repaired .pst file items.

5.2 Purchasing Full Version

You can buy the full version of Kernel for Outlook from any one of our authorized resellers – Element5, Asknet and 2CO.

As soon the purchase transaction with our resellers gets completed, our sales team will send you an email comprising the URL to download the full version of Kernel for Outlook and activation details of the software.

6. Support

We have an extensive and efficient support system in place to assist our customers with all issues related to using Kernel for Outlook. The software comes with an embedded help manual that can be accessed by clicking **Help→Software Help** in the menu-bar. You can also press the F1 key on the keyboard of your computer to access the embedded help of Kernel for Outlook.

You can access the online help for Kernel for Outlook at <http://www.nucleustechnologies.com/Online-Helps.html>

View Animated Working demo of the software at http://www.nucleustechnologies.com/Animated_Demo_PST.html

We also have live support wherein you can chat with our software experts at <http://www.nucleustechnologies.com/Support.html>

To talk on phone with our software experts call:

Help line:

+91-9818725861

1-866-348-7872 (Toll Free for USA/CANADA)

You can also email us about your queries at;

sales@nucleustechnologies.com for Sales

support@nucleustechnologies.com for Support

contact@nucleustechnologies.com for General Queries

7. Troubleshooting

This section deals with your generic and specific queries pertaining to using Kernel for Outlook.

7.1 Common Issues

Why does Kernel for Outlook have limitations in evaluation copy?

The free evaluation version of Kernel for Outlook is intended to enable you to experience the capabilities of the software. You will need to buy the software to save the recovered PST file items.

7.2 Frequently Asked Questions

How to Buy Kernel for Outlook?

You can buy Kernel for Outlook online at <http://www.nucleustechnologies.com/Buy-Microsoft-Outlook-Mails-Recovery-Software.php>

I have lost my full version for Kernel for Outlook. Can you help me?

Please email us at sales@nucleustechnologies.com. Please include your name, address, email address, and order confirmation number (if you have it). We will be happy to help you.

I cannot view the toolbar. How can I view it?

The tool-bar in Kernel for Outlook is by default visible. It might have become invisible by someone accidentally changing the settings.

Click **Tools** → **Standard** to make the tool-bar visible again.

8. Legal Notices

This section comprises the legal specification about Kernel for Outlook and the company NUCLEUS DATA RECOVERY.COM PRIVATE LIMITED

8.1 Copyright

NUCLEUS DATA RECOVERY.COM PRIVATE LIMITED, Nucleus Kernel accompanied user manual and documentation are copyright of NUCLEUS DATA RECOVERY.COM PRIVATE LIMITED, with all rights reserved. Under the copyright laws, this user manual cannot be reproduced in any form without the prior written permission of NUCLEUS DATA RECOVERY.COM PRIVATE LIMITED. No Patent Liability is assumed, however, with respect to the use of the information contained herein.

© NUCLEUS DATA RECOVERY.COM PRIVATE LIMITED. All rights reserved.

8.2 Trademark

Nucleus Kernel ® is a copyright work of NUCLEUS DATA RECOVERY.COM PRIVATE LIMITED

Windows 95®, Windows 98®, Windows ME®, Windows NT®, Windows 2000 Server®, Windows 2000 Advanced Server®, Windows 2003 Server®, Windows XP®, Windows Vista, MS-DOS and MS Office are registered trademarks of Microsoft Corporation.

All other brand and product names are trademarks or registered trademarks of their respective companies.

8.3 Disclaimer

The Information contained in this manual, including but not limited to any product specifications, is subject to change without notice. NUCLEUS DATA RECOVERY.COM PRIVATE LIMITED provides no warranty with regard to this manual or any other information contained herein and here by expressly disclaims any implied warranties of merchantability or fitness for any particular purpose with regard to any of the foregoing NUCLEUS DATA RECOVERY.COM PRIVATE LIMITED assumes no liability for any damages incurred directly or indirectly from any technical or typographical errors or omissions contained herein or for discrepancies between the product and the manual. In no event shall NUCLEUS DATA RECOVERY.COM PRIVATE LIMITED, be liable for any incidental, consequential special, or exemplary damages, whether based on tort, contract or otherwise, arising out of or in connection with this manual or any other information contained herein or the use there of.

8.4 License Agreement

Kernel for Outlook Copyright © by NUCLEUS DATA RECOVERY.COM PRIVATE LIMITED

Your Agreement to this License

You should carefully read the following terms and conditions before using, installing or distributing this software, unless you have a different license agreement signed by NUCLEUS DATA RECOVERY.COM PRIVATE LIMITED. The terms and conditions of this License describe the permitted use and users of each Licensed Copy of Kernel for Outlook. For purposes of this License, if you have a valid license, you have the right to use a single Licensed Copy of Nucleus Kernel.

Scope of License

Each Licensed Copy of Kernel for Outlook may either be used by a single person or used non-simultaneously by multiple people who use the software personally installed on a single workstation. All rights of any kind in Nucleus Kernel, which are not expressly granted in this License, are entirely and exclusively reserved to and by NUCLEUS DATA RECOVERY.COM PRIVATE LIMITED. You may not rent, lease, modify, translate, reverse engineer, decompile, disassemble, or create derivative works based on, Nucleus Kernel, nor permit anyone else to do so. You may not make access to Nucleus Kernel available to others in connection with a service bureau, application service provider, or similar business, nor permit anyone else to do so.

Warranty Disclaimers and Liability Limitations

Kernel for Outlook, and any and all accompanying software, files, data and materials, are distributed and provided AS IS and with no warranties of any kind, whether expressed or implied. In particular, there is no warranty for the quality of data recovered. You acknowledge that good data processing procedure dictates that any program, including Nucleus Kernel, must be thoroughly tested with non-critical data before there is any reliance on it, and you hereby assume the entire risk of all use of the copies of Nucleus Kernel covered by this License. This disclaimer of warranty constitutes an essential part of this License. In addition, in no event does NUCLEUS DATA RECOVERY.COM PRIVATE LIMITED authorize you or anyone else to use Kernel for Outlook in applications or systems where Kernel for Outlook failure to perform can reasonably be expected to result in a significant physical injury, or in loss of life. Any such use is entirely at your own risk, and you agree to hold NUCLEUS DATA RECOVERY.COM PRIVATE LIMITED harmless from any and all claims or losses relating to such unauthorized use.

General

This License is the complete statement of the agreement between the parties on the subject matter, and merges and supersedes all other or prior understandings, purchase orders, agreements and arrangements. This License shall be governed by the laws of the State of Delhi. Exclusive jurisdiction and venue for all matters relating to this License shall be in courts and for a located in the State of Delhi, and you consent to such jurisdiction and venue. There are no third party beneficiaries of any promises, obligations or representations made by NUCLEUS DATA RECOVERY.COM PRIVATE LIMITED herein.

Any waiver by NUCLEUS DATA RECOVERY.COM PRIVATE LIMITED of any violation of this License by you shall not constitute, nor contribute to, a waiver by NUCLEUS DATA RECOVERY.COM PRIVATE LIMITED of any other or future violation of the same provision, or any other provision, of this License.